



SEAL SOLUTIONS
AUSTRALIA

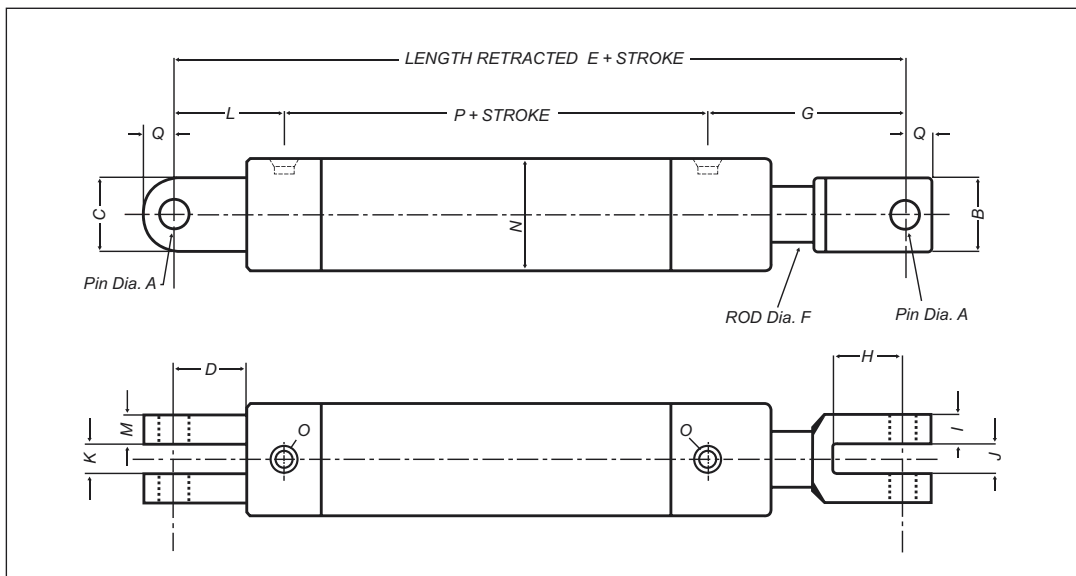
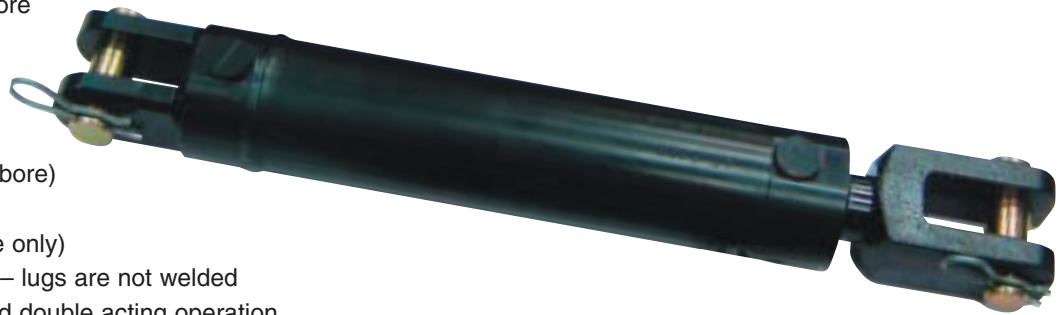
Hydraulic Cylinder Range



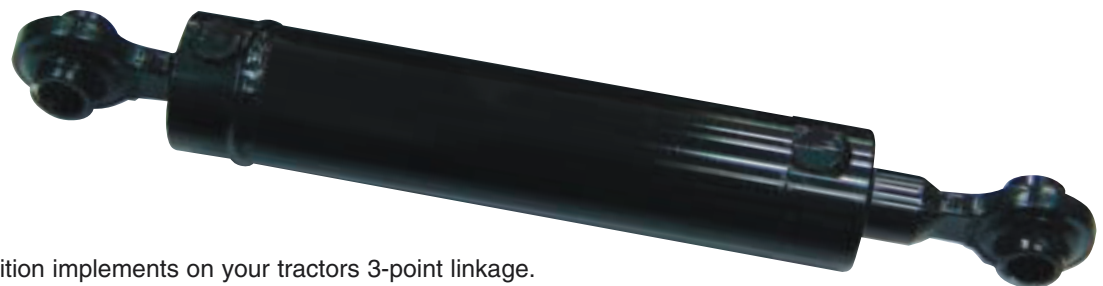
AG Series

Our AG Series offers the most affordable solution for your cylinder needs. Manufactured from high quality components they will provide years of trouble free operation.

- Available from 1½" to 4" bore
- Screwed gland
- High quality honed barrel
- Slimline construction
- One piece piston
- SG Iron rod clevis (2" - 4" bore)
- K1045 clevis pins
- 1¼" pins available (4" bore only)
- One piece steel base end – lugs are not welded
- Suitable for both single and double acting operation

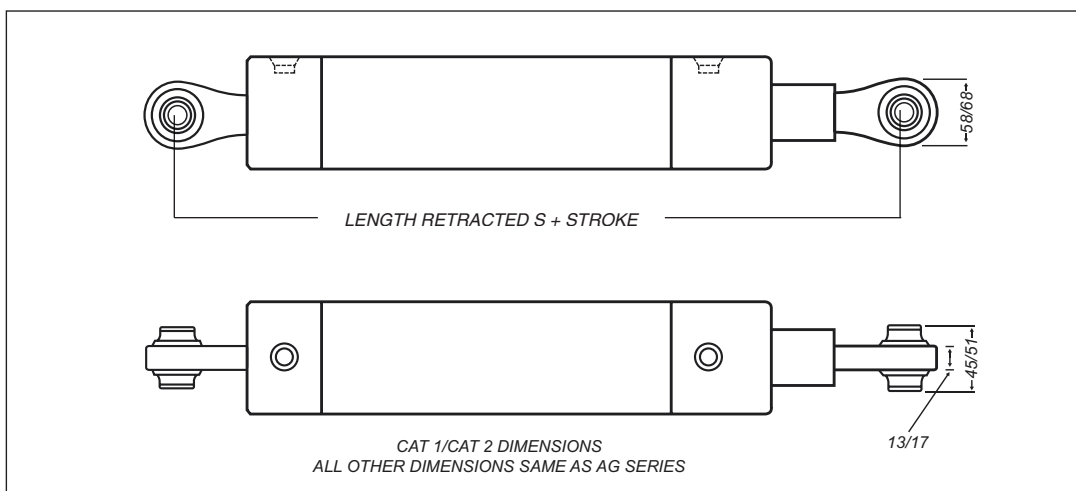


Top Link



This is the easy way to position implements on your tractors 3-point linkage. Based on the AG Series they are available in all bore and stroke lengths with either CAT 1 (¾") or CAT 2 (1") pin sizes.


(CAT 2 - not available in 1.5 inch bore)



AG Cylinder Dimensions

Bore Diameter	1.50" 38.10mm	2.00" 50.80mm	2.50" 63.50mm	3.00" 76.20mm	3.50" 88.90mm	4.00" 101.60mm
A +0.15mm +0.20mm	0.75"	1.00"	1.00"	1.00"	1.00"	1.00"
	19.05	25.40	25.40	25.40	25.40	25.40
B	1.75"	2.10"	2.10"	2.10"	2.10"	2.10"
	44.45	53.34	53.34	53.34	53.34	53.34
C	1.65"	1.97"	1.97"	1.97"	2.56"	2.56"
	41.91	50.04	50.04	50.04	65.02	65.02
D	1.25"	2.00"	2.00"	2.00"	2.00"	2.00"
	31.75	50.80	50.80	50.80	50.80	50.80
E ±3mm	9.5"	12.25"	12.25"	12.25"	12.25"	12.25"
	241.30	311.15	311.15	311.15	311.15	311.15
F	0.875"	1.25"	1.50"	1.50"	1.75"	1.75"
	22.23	31.75	38.10	38.10	44.45	44.45
G	3.50"	5.125"	5.125"	5.125"	5.125"	5.125"
	88.90	130.18	130.18	130.18	130.18	130.18
H	1.25"	2.125"	2.125"	2.125"	2.125"	2.125"
	31.75	53.98	53.98	53.98	53.98	53.98
I	0.46"	0.71"	0.71"	0.71"	0.71"	0.71"
	11.68	18.03	18.03	18.03	18.03	18.03
J	0.85"	1.125"	1.125"	1.125"	1.125"	1.125"
	21.59	28.58	28.58	28.58	28.58	28.58
K	0.84"	1.10"	1.10"	1.10"	1.10"	1.10"
	21.34	27.94	27.94	27.94	27.94	27.94
L	1.875"	2.75"	2.75"	2.75"	2.75"	2.75"
	47.62	69.85	69.85	69.85	69.85	69.85
M	0.48"	0.472"	0.625"	0.625"	0.787"	0.787"
	12.19	11.99	15.88	15.88	19.99	19.99
N	1.875"	2.375"	2.875"	3.500"	4.000"	4.500"
	47.63	60.33	73.03	88.90	101.60	114.30
O	9/16"	9/16"	3/4"	3/4"	3/4"	3/4"
	UNO	UNO	UNO	UNO	UNO	UNO
P	4.125"	4.375"	4.375"	4.375"	4.375"	4.375"
	104.78	111.12	111.12	111.12	111.12	111.12
Q	0.84"	0.950"	0.950"	0.950"	0.950"	0.950"
	21.34	24.13	24.13	24.13	24.13	24.13
R Rod Thread	0.75"-16	1.25"-12	1.25"-12	1.25"-12	1.25"-12	1.25"-12
	UNF	UNF	UNF	UNF	UNF	UNF
S ±3mm	10.25"	12.25"	12.25"	12.25"	12.25"	12.25"
	260.35	311.15	311.15	311.15	311.15	311.15

Order Code

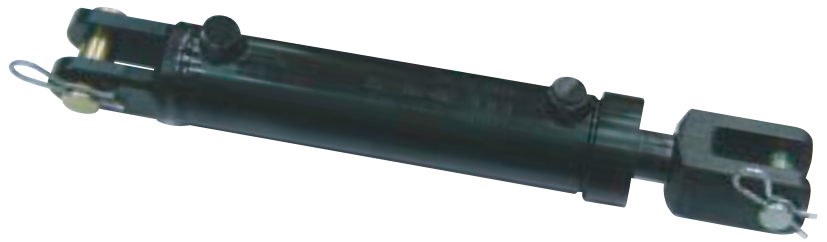
Series	Bore & Stroke	Port Position	Mounting
AG	****	 <p>A = 90° to pin</p> <p>B = Inline with pin</p>	<p>Blank = Female Clevis</p> <p>T1 = Top Link CAT 1 (3/4" pin)</p> <p>T2 = Top Link CAT 2 (1" pin) (CAT 2 - not available in 1.5 inch bore)</p>

i.e. AG 2508AT2 = AG series, 2.5" bore, 8" stroke, port position A, Top Link CAT 2

Industrial Series

Our heavy-duty cylinder is for your most rugged applications. Industrial series cylinders are available with a number of piston rod options.

- Available from 2" to 5" bore
- Screwed gland with external collar
- Optional piston rod sizes
- 1/4" wall honed barrel
- One piece steel base end – lugs are not welded
- SG Iron rod clevis (2" – 5" bore)
- K1045 clevis pins
- 1 1/4" pins available (4", 4.5" and 5" only)
- Suitable for both single and double applications



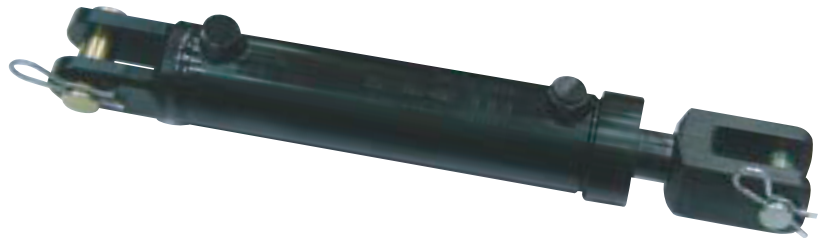
Special Cylinders

Special Cylinders are made to your requirements. Popular mounting options include flange, pin eye, foot, trunnion or we can design something specifically to suit your application. Also available is the end cap machined to accept a threaded cartridge valve with either counterbalance or pilot operated check functions.



Phasing Cylinders

Our unique phasing mechanism has no moving parts or groove for the piston seal to travel over, therefore giving longer seal life and minimal creep.



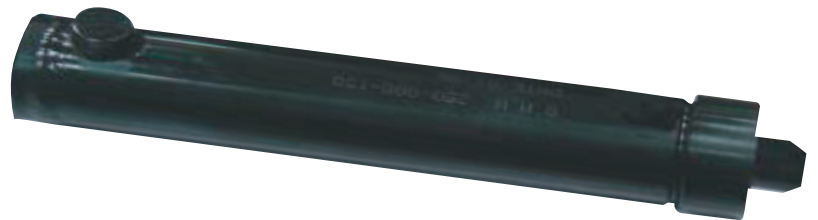
Quick Hitch Cylinders

Our range of Quick Hitch cylinders are available from 2" bore and are supplied complete with a pilot operated check valve.



Displacement Cylinders

Manufactured to your requirements of bore, stroke and mounting style. Our cylinder features a large width piston and wear ring for long trouble free life.



Operating Pressure

All cylinders up to 48" stroke are rated to operate at 3,000psi (210 Bar). In some applications higher pressures are permissible and are dependant of bore, stroke and load. For pressure ratings above the standard recommended please consult our Engineering Department.

Cylinder Piston Speeds

Cylinders used in double acting applications have a maximum seal velocity of 500mm/sec. When used in single acting applications the maximum seal velocity is 200mm/sec. To maximise seal life we recommend that a small amount of oil be placed in the air side of the cylinder. The use of breather plugs is highly recommended as they assist in preventing the ingress of contamination into the cylinder. Running a hose from the air side back to the reservoir can further increase the cylinder life.

Warranty

Mineparts and Seals Pty Ltd cylinders are covered by a 12-month warranty. Warranty covers materials and manufacturing defects only. Warranty is not covered if the goods are dismantled or repaired by any other persons unless given written permission by the manufacturer. Binding of mounting pins can result in a bent or broken piston rod. The cylinder must have free movement on pins in any position. Worn pins can also cause binding, ensure pins are always in good condition. A bent or broken piston rod is not covered by warranty.

This brochure and its contents are the property of Mineparts and Seals Pty Ltd and cannot be copied or reproduced in part or full without their written permission. In the interest of product improvement Mineparts and Seals Pty Ltd reserves the right to change the contents of this brochure without notice.